



MINING • STEEL • POWER

# JOHN IRON ORE MINE OF R. PRAVEEN CHANDRA ML NO. 2294

## SUSTAINABILITY REPORT

2023-24







MINING • STEEL • POWER

## GROUP COMPANIES

- E. RAMAMURTHY MINERALS & METALS PVT. LTD.
- PRAKASH SPONGE IRON & POWER PVT. LTD.
- BENAKA MINERALS TRADING PVT. LTD.
- CODELAND INFO SOLUTION PVT. LTD.

### Registered Address:

#59, 12th Main, Banashankari 1st Stage, 1st Block,  
Srinagar, Bengaluru-560 050

### Corporate Office:

#4006, "ERM HOUSE", K.R. Road,  
Banashankari 2nd Stage, Bengaluru-560 070, India.

Ph: +9180-26655930, +9180690 13370

[mail@ermgroup.in](mailto:mail@ermgroup.in)

[www.ermgroup.in](http://www.ermgroup.in)



## Contents

Sr. No.	Particulates	Page No.
1	Chairman Message	03
2	Chief Operating Officer Message	04
3	About this Report	06
4	Responsible Mining	07
5	Stake Holder Engagement	13
6	Environment Sustainability	15
7	Health and Safety	25
8	Social Responsibility	35
9	Positive Legacy and Ethical Governance	57
10	Value Addition	59





## CHAIRMAN MESSAGE

I am delighted to present our Sustainability Report for the year 2023-24, reflecting the values and dedication of the ERM Group towards a green economy and a sustainable future.

As Chairman, I want to emphasize that every human action has an impact, and the mining industry is no exception. At our mine, we have taken significant steps to minimize negative effects on the local environment and the well-being of nearby communities. However, we recognize that there is always room for improvement, and we remain dedicated to the principles of sustainability to further reduce our impacts.

Our commitment to sustainable development not only aligns with our core values but also ensures our long-term viability as a business. While we play a crucial role in producing essential minerals for national development, we also strive to make a positive difference in broader aspects such as conserving natural resources, supporting socio-economic development, and creating local employment opportunities.

The concept of sustainable development drives us to continuously challenge ourselves and seek ways to enhance every aspect of our operations. I take great pride in the efforts of our entire team, whose hard work and dedication have enabled us to make a positive contribution to the world in which we operate.

As we move forward, we will remain steadfast in our pursuit of sustainability, striving to create a better and more sustainable future for all. Thank you for your continued support and trust in ERM Group.

**R. Praveen Chandra**

Chairman,  
ERM Group



## MESSAGE FROM **CHIEF OPERATING OFFICER**

We take great pride in the recognition we have received for our sustainable mining practices and performance within the industry. To make a positive difference, we have adopted an Integrated Management System that encompasses Quality, Environment, Occupational Health, and Safety Management Systems.

Throughout the year 2023-24, we remained committed to our values and business strategy, delivering on our promises. We achieved a remarkable iron ore production during the year, showcasing our resilience and dedication to meeting the needs and expectations of all stakeholders.

Our proactive and positive approaches to safety, environmental protection, and corporate social responsibility have been crucial in ensuring our long-term success in the industry.

We extend our heartfelt gratitude to all our employees and stakeholders who have played an indispensable role in helping us achieve our goals. It is through their support and dedication that we have managed to uphold our reputation for sustainable practices and responsible mining.

**Dhananjaya G. Reddy**  
Chief Operating Officer,  
ERM Group







## ABOUT THIS REPORT

This is the 9<sup>th</sup> Annual Sustainability Report of R. Praveen Chandra, Mining Lease No 2294 in a bid to further strengthen our commitment to transparency and accountability through sustainability reporting.

2023-24 Report covers the operational performance of Mining Lease for the period from 1st April 2023 to 31st March 2024.

This Report presents information on the performances on Mining, Environment, Safety, Economic, and Social Responsibility for significant contributions to the sustainability and neighbouring communities where we operate. This Report has been prepared in accordance with the SDF Standards.





# RESPONSIBLE MINING

Vision	Values	Purpose
<ul style="list-style-type: none"> <li>To be the best Iron Ore Miner and Practice Sustainable Mining</li> </ul>	<ul style="list-style-type: none"> <li>Safety, Respect Integrity, Innovation, Accountability</li> </ul>	<ul style="list-style-type: none"> <li>Produce Results that leave a Positive Legacy in Society where we operate</li> </ul>

Our mining operation located in Niruthadi Reserve Forest area over an extent of 42.13 hectares at Survey No. 21 of Megalahalli, Sy. No.35 of Tanigehalli and Sy. No.1 of Chowdenahalli Villages, Holalkere and Chitradurga Taluks, Chitradurga District. Mining lease was granted in the year 1977 and is valid till 3<sup>rd</sup> February 2027. We are adhering to all Legal and other requirements and complying the terms and conditions in a time bound manner.

Our first priority is the safety of our people and the people who live in the communities where we operate. As a process of Continual Improvement Programme enhancing skill levels of employees through structured training and capacity building, Internal Audits, and external Audits were conducted and findings of the Audits were complied.

Third Party Environment Audits, Energy Audits were carried out during the year 2023-24. Compliance with respect to Legal and Other Requirements were met in totality.



## Life Cycle Process





## EXPLORATION & MINE PLANNING

Out of 42.13 Ha of lease area we have carried out in-house exploration by means of core drilling facility. We have drilled total of 8251.40 meters with 69 no's of bore holes and converted the entire mineralised zone into G1 Category. It is evident from exploration that 49.23 % of lease area is mineralised zone.

During the FY 2021-22, 5 holes were drilled by means of RC Drilling to prove the area of non-mineralisation. Samples of Exploration were analysed at NABL accredited laboratory and legal requirements of exploration has been met.



SURPAC software is used for Mine Planning and for Estimation of Reserves and Resources.

Inputs of mineral exploration has been used in the past for Mineral Characterization and Preliminary Beneficiation studies.

Reserves and Resources were re-estimated in the Approved Review and Updation of Mining Plan, accordingly total Iron Ore Reserves under UNFC 111 is 35.90 million tonnes at closing of the FY.

## MINING OPERATIONS

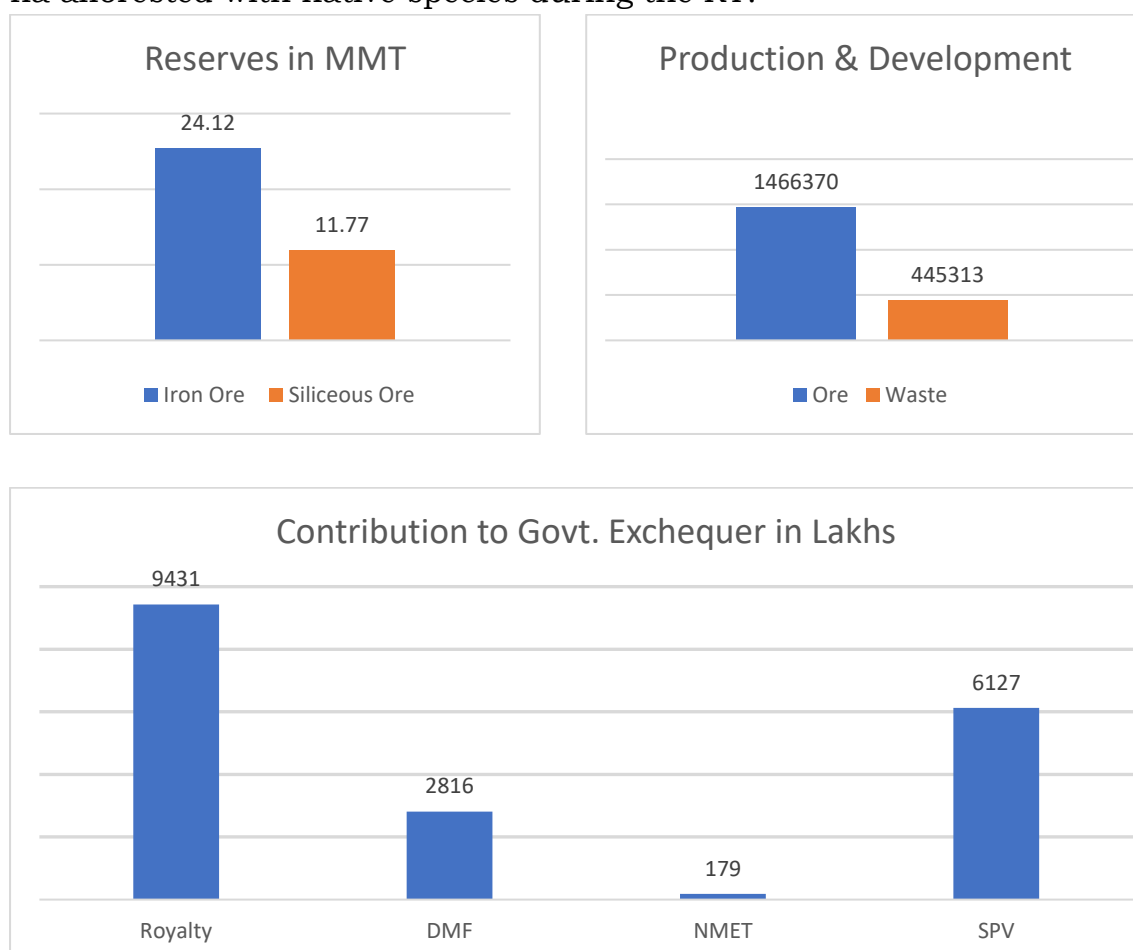
Eco- friendly Scientific and Systematic Mine operations has been carried out using Dumper and Shovel Combination.

Production and Development has been carried out in accordance with IBM approved Plan and 14,66,370 metric tonnes of Iron Ore of Avg. 57.00% grade was mined during 2023-24.

Iron ore was sold via E-Auction/Purchase Order to local steel manufacturers in Karnataka and Andhra Pradesh during the years 2023–2024, as well as for export to Goa and Panambur. There were no Customer Complaints pertaining to Quality of Material registered during 2023-24.

Mine is certified under ISO 9001:2015 for Quality Management System from Bureau Veritas.

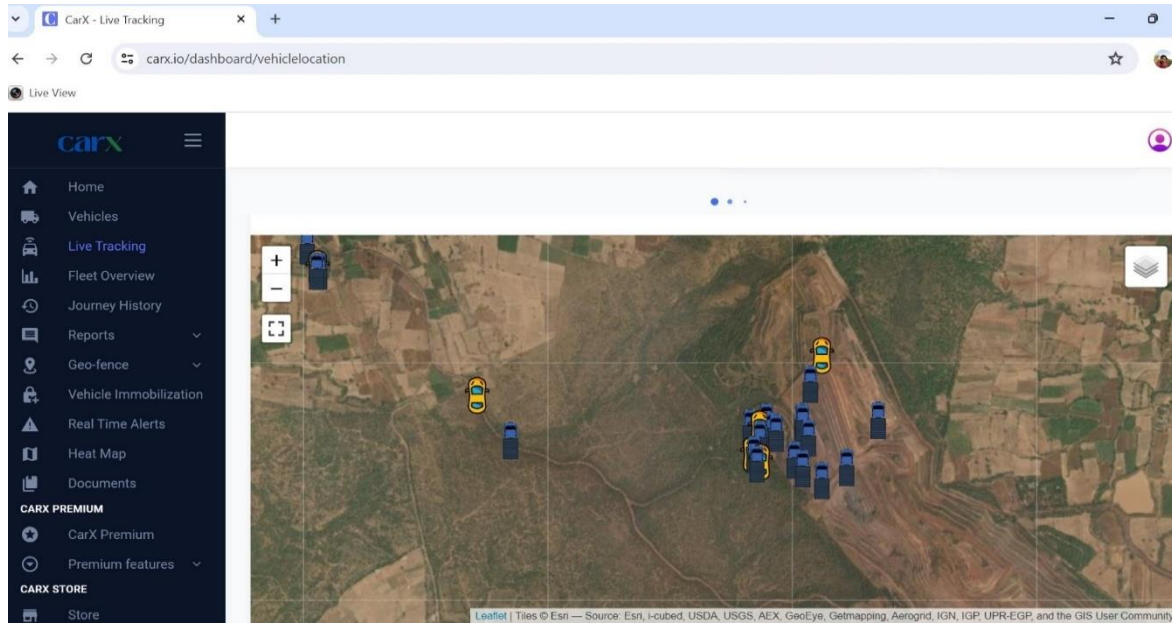
Dumping has been carried out in earmarked area. 08 no's vertical drain with 270 meters were constructed during RY. Inactive dump terraces were covered with Geo-textile coir mats covering 10,000 m<sup>2</sup>. Dump area of 1.97 ha afforested with native species during the RY.





## SAFETY IN OUR OPERATIONS

Proactive measures have been taken for Safety in all our operations. Advanced technology like Proximity Warning Devices, Audio-Visual Reverse Camera, Fatigue Monitoring Device, GPS enabled Fleet Management System has been put in place for Dumpers.



### Fleet Management System

Height, Width of Benches, Bench Slope are maintained as per safety Cut-off factor. Pit Slope Stability carried out in 2020-21 and overall slope is 22 to 23° and Dump Slope carried out in 2021-22 average is 29 to 34° by NITK Suratkal.



Hazard Identification and Risk Assessment has been carried out across all our operations and Controls has been established.

Tripartite Meeting were held on implementation of recommendations of 12th conference OF SAFETY at mines on 02<sup>nd</sup> February 2024. Safety Management System, Work Permit, One Day Safety Officer, Lock Out Tag Out Procedures, Work Instructions, Operational Control Procedures have been established.

Emergency Preparedness Plan, Mock Drills, Trainings are conducted on regular basis. Workmen Participation in Occupational Health and Safety Management System is ensured by engaging them in identification of HIRA, Pit Safety Committees.



Standard Operating Procedures to work amidst COVID-19 were framed and implemented in a structured manner.



## STAKE HOLDER ENGAGEMENT

Over the years, we have cultivated strong relationships with our stakeholders by implementing meaningful engagement programs.

The Company's ability to unlock and understand the major issues and concerns of its stakeholders, and its capacity to respond to their issues and concerns in a timely manner, has been key to its sustainability approach.

We keep the lines of communication between the Company and its various stakeholders open, and regularly utilize them to valuable insights about ongoing and emerging issues within the Company and the mining industry. Management has identified External & Internal Issues and needs and expectation of interested parties has been addressed.

Meetings are conducted mostly through hybrid mode with Stake holders on account to Pandemic to address their concerns.

During the year 2023-24 meetings were held with District Administration, FIMI, Elected Public Representatives, Village heads and there needs and expectations were addressed.



Stakeholder	Concerns	Mode of Engagement	Response
<b>Regulators</b>	<ul style="list-style-type: none"> <li>Accurate disclosures</li> <li>Compliance with standards and Regulations</li> <li>Taxes and Certifications</li> </ul>	<ul style="list-style-type: none"> <li>Annual, quarterly, and monthly reports</li> <li>Audits/ Inspections</li> <li>Credibility &amp; Certifications</li> </ul>	<ul style="list-style-type: none"> <li>Timely compliance with reports</li> <li>Adhering to strict compliance w.r.t statutes</li> </ul>
<b>Local Government</b>	<ul style="list-style-type: none"> <li>Environment Management</li> <li>Community Development</li> </ul>	<ul style="list-style-type: none"> <li>Credible methodology to evaluate impacts and its mitigation</li> <li>Engaging in CSR Program</li> </ul>	<ul style="list-style-type: none"> <li>Environment Audits</li> <li>CSR Reports</li> </ul>
<b>Employees</b>	<ul style="list-style-type: none"> <li>Balancing Work Life</li> </ul>	<ul style="list-style-type: none"> <li>Employee engagement Programs</li> </ul>	<ul style="list-style-type: none"> <li>As needed</li> </ul>
<b>Contractors</b>	<ul style="list-style-type: none"> <li>Man Power Availability</li> <li>Machinery Availability</li> </ul>	<ul style="list-style-type: none"> <li>Contractual agreements</li> </ul>	<ul style="list-style-type: none"> <li>Transparent Management Practices</li> </ul>
<b>Communities</b>	<ul style="list-style-type: none"> <li>Socio Economic Development</li> </ul>	<ul style="list-style-type: none"> <li>CSR</li> <li>Contributions to SPV &amp; DMF</li> </ul>	<ul style="list-style-type: none"> <li>Effective implementation and Monitoring</li> </ul>
<b>Customer</b>	<ul style="list-style-type: none"> <li>Quality Products</li> </ul>	<ul style="list-style-type: none"> <li>Adhere to Declarations and Specifications</li> </ul>	<ul style="list-style-type: none"> <li>One to One Meetings</li> </ul>
<b>Suppliers</b>	<ul style="list-style-type: none"> <li>Payment</li> <li>Specifications</li> </ul>	<ul style="list-style-type: none"> <li>Meetings &amp; Communications</li> </ul>	---

During the year no Public Grievance were raised. Mechanism has been established for public grievance redressal, needs and expectations of interested parties are discussed in Management Review Meetings.



## ENVIRONMENT SUSTAINABILITY

We recognise that environmental performance is a critical component of our business.

Company's commitment is to not only maintain but enhance our 'licence to operate' and our goal is to go beyond compliance and adopt a leading practice approach. We are committed to monitoring and managing the environmental impacts of our activities to secure sustainable environmental future for communities surrounding our sites, even after our operations cease.

We comply with all environmental laws and implement environment standards in lines with ISO 14001:2015, certified by the Bureau Veritas.



## OPERATIONAL HIGHLIGHTS

We are certified with ISO 14001:2015 by Bureau Veritas.

Mining activities, by nature, have significant impacts on the environment, especially when not pursued in a responsible manner. The negative impacts of mining activities include water depletion, de-forestation, pollution, and increased greenhouse gas emissions. The public perceives that the mining industry contributes to environmental destruction; therefore, it is critical that mining companies manage their environmental impacts properly. We at John Iron Ore Mines strives to implement best practices in environmental management that adhere to the principles of responsible mining.

Nature of our Mining operations, proper management of natural resources is part of our business ethics and is integrated in our overall approach. The organisation implements a comprehensive environmental program that addresses all phases of mining, from exploration, mine development, operations, and Progressive Mine Closure.

Mine environmental program is comprised of management initiatives for land resources, water resources, hazardous and toxic waste, and air quality, as well as the activities of enhancing of green cover, promoting Bio-Diversity Conservation Measures.

During the 2023-24, we have planted 15940 saplings with in lease area and 26620 saplings outside the lease area with 65% survival rate within mining lease and 35 % outside the mining lease.

Construction of 08 No.s of vertical drain with 270 meters lenght taken up during RY. De-silting of engineering structures were also carried out.

Identification of Significant Environment Aspect and Impact Studies has been carried out and controls have been established to mitigate aspect and impacts.

Compliances to all applicable Environment and Forest laws/conditions are carried in time bound manner.

Environment Monitoring in Core and Buffer Zones are carried through NABET accredited and the MoEF & CC recognised third party laboratory and monitored results are well within permissible standards.

Disposal of Hazardous waste oil is carried out through Registered Recycler and legal compliances are met with. 98.5% of generated Hazardous waste oil has been disposed to registered recycler.



Recharge Structures like rain water harvesting pond at nursery, check dams, gully Plugs, settling pond which were previously constructed has been maintained for Augmentation of Ground Water.

Hydrogeological Studies were carried out surrounding 5km of mine lease area during the RY.

Innovative technologies like Dry fog dust suppression systems have helped in conserving ground water. The consumption of water was 0.043 Kilolitres per Metric tonne of production. We have utilised only 50,214 KL for the RY out of total sanctioned capacity 78,936 KL of ground water per annum.

Efforts has been made in association with ICFRE-Dehradun for Identification RET species in our Bio-Diversity Conservational area and to relocate the same to Nursery for raising these climbers and to plant them on in-active dumps.

Forest Fire lines of 5.1 kilometres has been made in under guidance of Range Forest Officer, Holalkere Range surrounding mine lease area.

Activities under Wild Life Management Plan during the year 2023-24 included

- Making of Water troughs in forest area for quenching thirst of animals.
- Fabrication and erection of Pergola Makan at Nirthadi Forest area.
- Sensitization and awareness on Wild Life Management and importance of forests by putting public hoardings.

LULC (Land Use Land Cover Satellite Imagery) around mine lease area has pointed out for increase in green cover around mine lease area.

Organic Waste from the canteen is used for vermicompost at a nursery developed and maintained with a capacity to raise 50,000 saplings annually.

During the year 2023-24, the area received 431.5 mm of rainfall.

For 2023-24, there were no incidents of non-compliance with environmental laws and regulations. As a mining organization, we adhere to the Environment Protection Act 1986, also relevant rules and regulations governing Mining and the Environment.



## SOIL MOISTURE CONSERVATION - R & R WORK



Retaining wall and garland drain, enrichment plantation as part of reclamation



Vertical Drain on Waste Dump



Retaining Wall & Garland Drain at toe of waste dump under progress



Settling Pond



Reconstruction of Check Dam outside the lease area



## AFFORESTATION



Afforestation on Waste dump



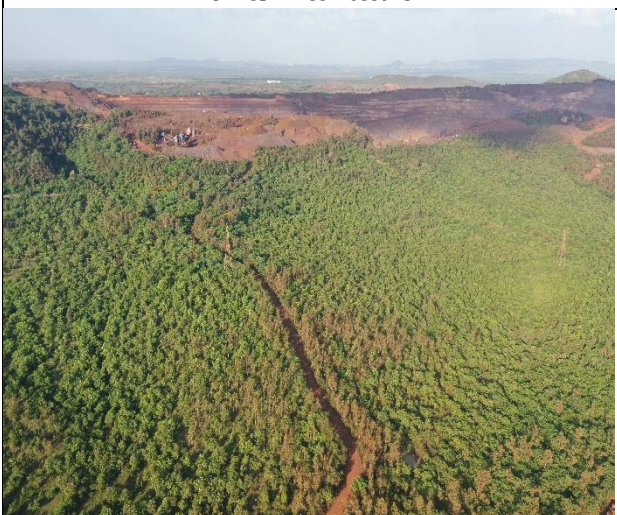
In house Nursery



Avenue Plantation



Safety zone plantation



Afforestation outside the lease area



Afforestation within the Lease area



## ENVIRONMENT MANAGEMENT



Hood covering for conveyors at mineral processing plant & Afforestation View



Dry fog dust Suppression system at the Input of Mineral Processing Plant



Truck Mounted Dry Fog dust suppression system



Dust suppression on Mine Benches with Hydraulic water sprinkler system



Noise Monitoring



## GEO – COIR MAT & OTHER ENVIRONMENT PROTECTIVE MEASURES



Geo textile coir mats laid on waste dump & Dump covered by Grass



Nakshtra Garden



Rainwater harvesting pond at nursery



Medicinal Gardan & Vermicompost Unit at Nursery



## WILDLIFE MANAGEMENT SURROUNDING THE MINE LEASE AREA

**ಜಿಲ್ಲಾ ಅರಣ್ಯ ಇಲಾಖೆ**  
**ಜಿಲ್ಲಾ ಪಾದೇಶಿಕ ಅರಣ್ಯ ವಿಭಾಗ, ಚಿತ್ರದುರ್ಗ**  
 ನಿರರ್ಥಕಾಡಿ ಕಾಂಪ್ಲೆಕ್ಸ್ ಅರಣ್ಯ, ಹೊಳಲ್ಕೆರೆ ಪ್ರಾದೇಶಿಕ ವಲಯ, ಹೊಳಲ್ಕೆರೆ  
**ಕೊಡುಗೆ: ಅರ್-ಪ್ರಬೇಂದ್ರ, ಗಣಿ ಮಾಲೀಕರು, ಜಾನ್ ಮೈನ್ಸ್, ಚಿತ್ರದುರ್ಗ**

ಒಂದು ಮರ ಬೆಳೆದಿದ್ದು ಕಟ್ಟಡದ ಸಮಾನತೆಯಲ್ಲಿ  
 ಅದು ನಿಂತಿರುವ ಹಣ್ಣು ಹೂವು, ಮಕ್ಕಳು ತಿಳಿದಿರುವುದು ರೂ 20,000.00  
 ಮಾತ್ರ ಗಾಂಗೆಗೆ ತೆಗೆದು ಕೊಳ್ಳಲಾಗುತ್ತದೆ  
 ಅದರ ಅಕ್ಕರ ಪ್ರಕಾರ 50 ವರ್ಷದ ವಯಸ್ಸಿನ ಮರದ ಬೆಲೆ ರೂ 15,70,000.00  
 ಆದ್ದರಿಂದ ರೂ 2,50,000.00  
 ಮರದ, ಹಣ್ಣು, ಕೀಟಗಳಿಗೆ ಅಪಾರ ಮಹತ್ವ ಅಲ್ಲದ ರೂ 2,50,000.00  
 ನಿರರ್ಥಕಾಡಿ ಪಾದೇಶಿಕ ಮಕ್ಕಳು ತಿಳಿದಿರುವುದು ರೂ 3,00,000.00  
 ಮಕ್ಕಳು ಸಮೀಪದಲ್ಲಿ ತಿಳಿದಿರುವುದು ರೂ 1,50,000.00  
 ಮಕ್ಕಳು ಕೆಲವು 1-2 ಅಕ್ಕರ ಕೊಡುವುದು ರೂ 15,70,000.00  
 ಒಂದು ಮರದ ಬೆಲೆ ರೂ 15,70,000.00  
 ಒಂದು ಮರದ ಬೆಲೆ ರೂ 15,70,000.00  
 ಒಂದು ಮರದ ಬೆಲೆ ರೂ 15,70,000.00

**50 ವರ್ಷ ವಯಸ್ಸಿನ ಮರದ ಮೌಲ್ಯ: ಮೊತ್ತ ರೂ 15,70,000.00**

Display boards on importance of Forest



Hoarding signifying the importance of Wildlife and Forest Fire put at the entrance of Approach Road to mines.



Awareness on Conserving wildlife and Forests



Hoardings signifying Importance for Forest and Wildlife put along Nirthadi RF boundary



Watch towers erected in forest area



Constructed Parabola in Forest area

### Environment Expenditure during 2023-24

Sr. No.	Description	Amount in ₹
1	Nursery development, green belt development, afforestation.	21,67,934.00
2	Celebration World Environment Day & Mission LIFE Program & Swachhata Pakhwada	2,52,752.00
3	Maintenance of Water tankers, dust suppression, dry fog system and hydraulic water spraying system.	8,33,062.00
4	Water tanker hire Charges.	72,50,340.00
5	Water tanker HSD & Driver & Helper Expenses	62,87,792.00
6	Professional Charges & Environmental Quality Monitoring.	45,13,500.00
7	Geo Coir Mat, Grass Seeds & Soil Conditioner.	19,72,900.00
8	R & R Work (Retaining wall & Garland Drains).	16,55,916.00
9	Sweeping Machine	67,26,000.00
11	Dust Compensation	13,34,926.00
<b>Total</b>		<b>3,29,95,122.00</b>

### Species planted within and outside the lease area

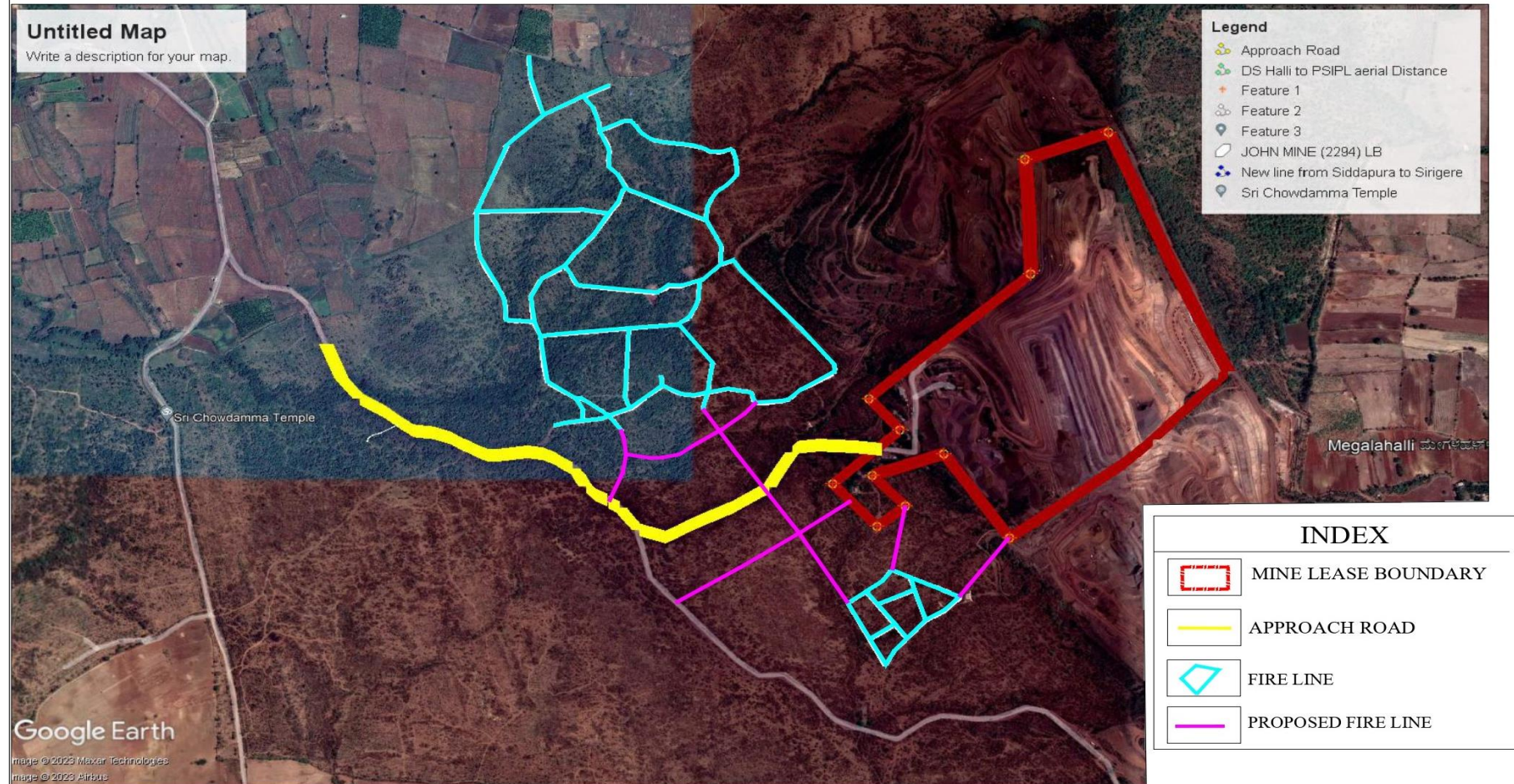
Sl. No	Species	Family	Local Name
1	Bambusa arundinacea	Poaceae	Bidiru
2	Euphorbia tirucalli	Euphorbiaceae	Atthimara
3	Ficus benghalensis	Moraceae	Ala
4	Ficus racemosa	Moraceae	Atthi
5	Ficus religiosa	Moraceae	Arali
6	Phyllanthus emblica	Euphorbiaceae	Nelli
7	Pongamia pinnata	Fabaceae	Honge
8	Syzygium cumini	Myrtaceae	Nerale
9	Tamarindus indica	Caesalpiniaceae	Hunise
10	Tectona grandis	Verbenaceae	Thega
11	Albizia lebbeck	Mimosaceae	Baage
12	Azadirachta indica	Meliaceae	Bevu
13	Milia dubia	Meliaceae	Hebbevu
14	Grivellia Robusta	Proteaceae	Silver Oak
15	Artocarpus hetrophyllus	Moraceae	Jack Fruit
16	Gliricidia Sepium	Fabacea	Gobbarada Mara
17	Thespesia populnea	Malvaceae	Buguri



# PROPOSED PLAN FOR FOREST FIRELINE 2023-2024

IN NIRUTHADI RESERVE FOREST AREA SURROUNDING THE MINE LEASE IN RESPECT OF JOHN MINES OF R PRAVEEN CHANDRA, ML No-2294.

DISTANCE COVERED - 5.1KM





# Health & Safety

## Health and Safety

Our primary focus will always be to send each worker home safely at the end of each day.

We strive to manage our workforce in a manner that enables to develop and retain the best talents in the local mining industry.

By promoting and upholding the wellness of its employees, the Company ensures that it has a reliable talent pool at all times, thereby safeguarding business continuity and its competitiveness as a responsible mining company.

We are engaged in continued development and evaluation of new technologies and processes that will promote the safety and health performance of every employee.



68.81 % of employed are locals.



79.22 % of total manpower are skilled.



94.11 % un-skilled are locals



79.22 % those skilled are by lessee.



302 working days.



181 is avg. daily employment.

## Performance Indicators

Mine is ISO 45001:2018, Occupational Health and Safety Assessment Series Certified	One Fatality during 2023-24	Zero Reportable Injury During 2023-24	No Occupational Diseases among Employees	Safety Management System implemented
--	-----------------------------	---------------------------------------	--	--------------------------------------

## Training Hours & Skill Building



No of Trainings Identified	No of Training Planned	No of Trainings Conducted	Remarks
18	16	14	87% achieved

## Swachhata Pakhwada 2023 - Ek Kadam Swachhata Ki Aur

As part of the Swachhata Pakhwada Celebrations 2023, a series of special awareness campaigns were organized in the surrounding villages of John Iron Ore Mine of R. Praveen Chandra, situated in Chitradurga District of Karnataka state. Here is a detailed summary of the activities conducted:

### **Day 1, November 16, 2023:**

**Venue:** John Iron Ore Mine

**Activity:** An awareness talk focused on the importance of personal hygiene and maintaining cleanliness in the workplace.

**Speaker:** Mr. Muralidhara BS, Manager Mines, addressed the gathering, emphasizing the critical role of cleanliness in promoting health and safety at both personal and professional levels.



### **Day 2, November 17, 2023:**

**Venue:** Government Higher Primary School, Sirigere.

**Activity:** An awareness program and Shramadhana activity were conducted. The program covered both the school premises and surrounding areas.

**Participants:** Approximately 200 students and 7 teaching staff, including Headmistress Mrs. Dakshyanamma and teacher Mrs. Kalpana KG, actively participated, demonstrating a strong community effort towards cleanliness.



**Day 3, November 18, 2023:**

- **Venue:** Government Primary School, Kagalagere megalahatty Village.
- **Activity:** An afforestation initiative along with an awareness program on the importance of cleanliness and personal hygiene.
- **Participants:** Around 30 students and 3 teaching staff, including Headmaster Mr. Kumarappa, participated. School hygiene kits were handed over to the Headmaster by Mr. Subhash, Deputy Manager – Logistics.

**Day 4, November 20, 2023:**

**Venue:** Government Primary School, Muttugaduru Village

**Activity:** An awareness program emphasizing the significance of personal hygiene in daily life and the proper segregation and disposal of waste, distinguishing between biodegradable and non-degradable waste.

**Speakers:** Mr. Subhash Chavan, Deputy Manager Logistics, and Mr. Nityanandachari, Headmaster of the Government Primary School, shared insights on maintaining cleanliness within the school premises. Hygiene kits and an awareness board were handed over to the Head master.

**Day 5, November 21, 2023:**

**Venue:** Government Primary School, Gulaganjihatti Village

**Activity:** An awareness program that included a drawing competition to engage students creatively in the cleanliness drive.

**Participants:** Approximately 35 students and teaching staff participated. The event was addressed by Mr. Thippeswamy, Headmaster, and the School

Development & Monitoring Committee President, Mr. Govind Naik. School hygiene kits were handed over by Mr. Ajitkumar B Mali, Deputy Manager Environment & HR.

**Day 6, November 22, 2023:**

**Venue:** Government Primary School, Tanigehalli Village

**Activity:** An awareness program and distribution of school hygiene kits, including dustbins, cleaning materials (like Harpic, toilet brush, handwash), and an awareness board.

**Participants:** The Headmaster, Mr. B. Thippeswamy, received the items. Additionally, Dettol soap and soap boxes were distributed to all students as a gesture towards promoting personal hygiene.

**Day 7, November 23, 2023:**

**Venue:** Mine office

**Activity:** An awareness program to promote cleanliness and implement effective waste management practices. Eye-catching wall paintings were recreated to raise awareness and inspire a sense of responsibility among employees and visitors.



**Day 8, November 25, 2023:**

**Venue:** Government Primary School, Alagavadi Village

**Activity:** An awareness program on plastic waste management and the Aathmanirbhar Bharat concept, emphasizing the need to reduce, reuse, recycle, and save natural resources.



**Speaker:** Dr. H.K. Swamy addressed the gathering. The event included drawing and speech competitions, with about 110 participants, including students and teaching staff.



**Day 9, November 26, 2023:**

**Venue:** Kanaka Circle, Chitradurga

**Activity:** A Swachhata campaign and plantation program organized in collaboration with the Target 10K group. Around 35 saplings were planted, promoting environmental conservation and community involvement in cleanliness drives.



**Day 10, November 29, 2023:**

**Venue:** Government Primary School, Sirigere Village

**Activity:** A drama and speech competition on cleanliness, followed by an interactive session on hygiene practices, such as avoiding single-use plastics and proper handwashing techniques.

**Participants:** Approximately 250 individuals, including students and teaching staff, participated in the program. Mrs. Drakshayanamma G. S., the Headmaster, along with other teaching staff, addressed the event. School hygiene kits were distributed by Manjunath K. S. CSR Head.



**JOHN MINE OF R. PRAVEEN CHANDRA**  
Chitradurga Taluka & District

**UNDER THE AEGIS OF**  
**INDIAN BUREAU OF MINES**  
**GOVT. OF INDIA BENGALURU REGION**  
**CELEBRATING**



**SWACHHTA PAKHWADA**

**FROM 16.11.2023 TO 30.11.2023**

These activities aimed at promoting cleanliness, hygiene, and environmental responsibility among local communities, particularly in schools, fostering a culture of Swachhata (cleanliness) and sustainable living.



**CELEBRATION OF WORLD ENVIRONMENT DAY:**  
**"MISSION LIFE" CAN BECOME A MASS MOVEMENT OF**  
**ENVIRONMENTAL CONSCIOUS LIFESTYLE.**

World Environment Day with the theme of "Beat Plastic Pollution" was celebrated on 5<sup>th</sup> June 2023, on this occasion John Iron Ore Mine of R Praveen Chandra (ML. NO. 2294) has carried out different program few glimpses with photographs are attached

With coordination of Karnataka State Pollution Control Board, we are celebrated world environment day & "Mission LIFE" a mass movement of Environmental Conscious Lifestyle.



Plantation by Staff & Workers



"Mission LiFE a mass movement of Environmental Conscious Lifestyle.



We organized a plantation program at our mine site in the presence of staff and workers.



We donated approximately 2500 fruit-bearing and native species saplings to the local NGO "Target 10K," which were planted on June 4, 2023, in Chitradurga.





On World Environment Day, June 5, 2023, mass plantation activities were conducted within and outside the lease area. The event was led by Mr. Ranadive N., Deputy General Manager along with Mr. Muralidhara B.S., Manager-Mining, Mr. Vinayaka B.S., Manager (Geology and QC), Mr. Amaresh, Senior Officer Mechanical, Mr. Vinay, Senior Officer Civil, Mr. Sridhar, Junior Manager Mechanical, and involved all workers and security staff.



Celebration of world Environment day at John Iron ore Mine of R Praveen Chandra



Cotton Bag Distribution to the workeres



Green Caps Distribution to Staff & Workeres



## SOCIAL RESPONSIBILITY

We believe that “Corporate Social Responsibility is the continuing commitment by the business entity to behave ethically and contribute to economic development while improving the quality of life of the workforce and their families as well as the local community and the society at large. Our goal of CSR is to embrace responsibility for the company’s actions and encourage a positive impact through our activities on the environment, consumers, employees, communities, stakeholders.

**R. Praveen Chandra**

### Corporate Social Responsibility

CSR programs at ERM Group reflect our pursuit of building a resilient and sustainable society. Whereby, we have been able to pursue our social commitments by deriving inspiration from the needs of the communities.

Through comprehensive assessment exercises, we have been making interventions to promote better education, improve healthcare and support rural communities while meeting compliance requirements.

This we undertake with the exclusive team of CSR Professionals as a sense of duty, compassion, and commitment to achieve both corporate growth and sustainability.

The CSR activities of the ERM group focus on bringing about inclusive growth in society by making key following interventions in the field of Healthcare, Education, Water, Infrastructure, and Culture and empowering Rural communities.



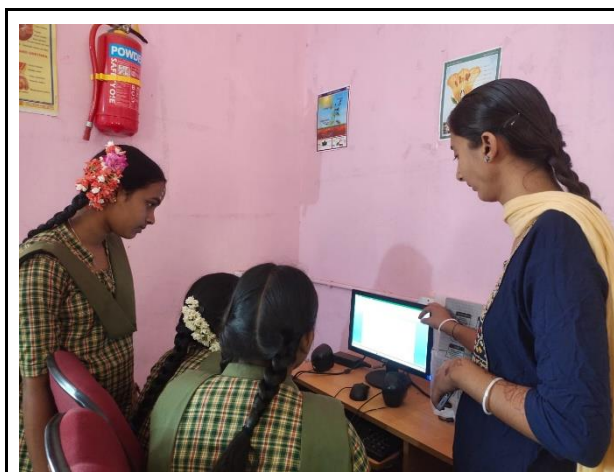
## Education

A good education is a foundation for a better future. Hence, our aim is to better the learning experiences of children at schools & increase the retention rate through the academic years. Additionally, we focus on instilling demand for education in families from proximate underprivileged communities.

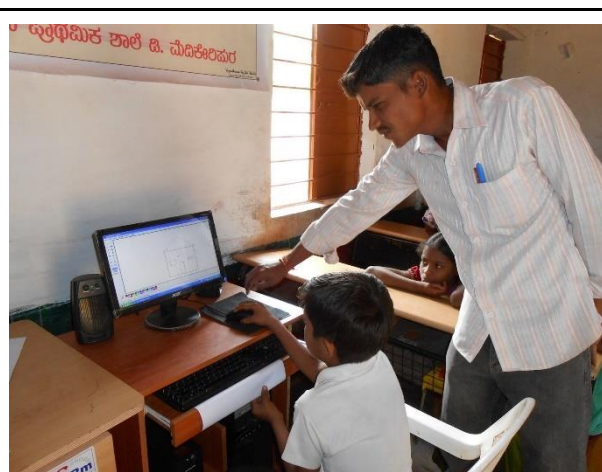
We endeavour to spark the desire for learning and knowledge at every stage by providing elementary infrastructure for schools, enhancing literacy rates of primary education through free/vocational tuition classes, Career guidance, and financial aid to underprivileged merit students.

Programs executed in the education domain are as follows:

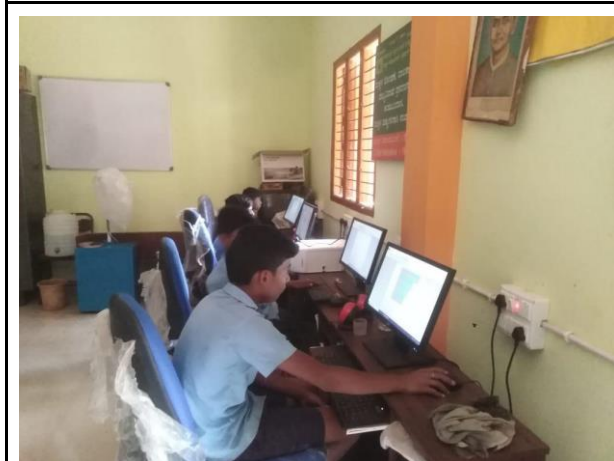
Free Computer coaching classes for students of class V to class VII.



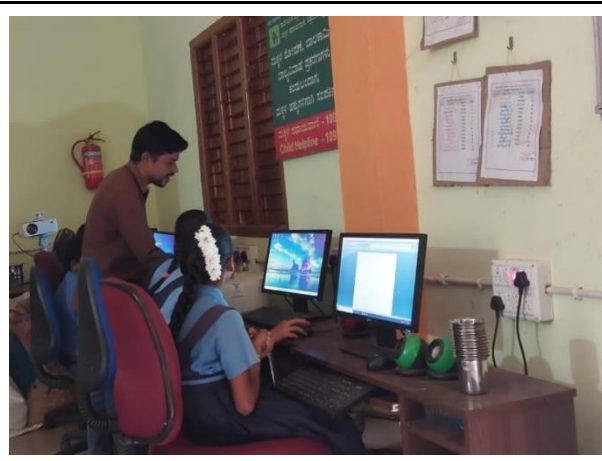
Kagalagere Village



D. Medikeripura Village



Tanigehalli Village



D. Medikeripura Village



## Newspapers distribution

In collaboration with Prajavani and Deccan Herald throughout the academic year 2023-24, we aimed to support SSLC students by providing them with essential educational resources. Over the course of 160 days, we have distributed a total of 16,500 copies of daily newspapers containing relevant study materials. This initiative reached five high schools and benefited 650 students in total.

This initiative significantly facilitated access to essential study materials, contributing to the academic growth and development of the students involved. The collaboration between these newspapers and the educational institutions represents a meaningful investment in the future of these SSLC students, fostering a positive impact on their educational journey.



Free distribution of newspapers to SSLC students

## School Bus Facility

Convenience is crucial for students from villages situated far from schools and colleges, particularly for those from lower socio-economic backgrounds. A reliable transportation service helps ensure that students can attend their classes regularly, thereby enhancing their academic experience and success.

To facilitate education and improve logistics for school and college-going children, a noteworthy initiative was undertaken in Megalahalli village. Here, 45 students who were studying in Sirigere, a remote village, faced the challenge of walking 2.5 km

from their village to the main road. Recognizing this difficulty, a company extended its support by providing transportation assistance to all 45 students.

Approximately 300 students from various villages have benefited from this program. This initiative plays a significant role in improving attendance and academic performance by reducing the physical strain and time involved in commuting. The provision of a school bus service not only enhances the students' educational experience but also underscores the importance of supporting rural education and addressing logistical challenges faced by students in remote areas.



School Bus facility to Surrounding Villages



### Financial Support Initiative for Education Aid

We provide financial aid to underprivileged merit students to help them join schools, colleges, or pursue higher education.



Prathibha Karanji program at Govt Higher Primary School, Kagalagere Village

### Distribution Scouts & Guides Uniform:



Distribution of 500 Sets of Scout & Guide Uniform to Hiregutanur Hobli

## Digital Education

We have installed 10 Smart Class Digital Boards equipped with the pre-loaded software in 10 government higher primary schools in the vicinity. This initiative aims to enrich the educational experience by integrating advanced technology into classrooms. Annually, over 900 students benefit from this project. Below is a list of schools where smart class boards have been installed:

Sr. No.	Name of Schools / Institute	Village
1	Govt. Higher Primary High School	Tanigehalli
2	Govt. Higher Primary High School	Kagalagere
3	Govt. Higher Primary High School	Muttugaduru
4	Govt. Higher Primary High School	Alagavadi
5	Govt. Higher Primary High School	Megalahalli
6	Govt. Higher Primary High School	Bommavvanagatihalli
7	Govt. Higher Primary High School	Bommenahalli
8	Govt. Higher Primary High School	Kadleguddu
9	Govt. Higher Primary High School	Sirigere
10	Institution of Agricultural Technologists	Chitradurga







Digital Education - Smart class provided to 10 Govt. Higher Primary Schools around the mine lease area.

## Health Initiative:

Our goal is to provide quality healthcare facilities to the communities surrounding us through various health initiatives. These include Primary Health Care Centres, Mobile Health Clinics, Specialised Health Camps, and preventive health measures through awareness programs.

## Mobile Health Clinic:

Company is operating a fully-fledged, air-conditioned Mobile Health Clinic (MHC) across nine villages for the past 14+ years. This initiative aims to ensure that residents in these remote areas have access to primary medical care. The clinic is staffed with qualified Doctor and healthcare professionals and offers a range of services, including routine check-ups and treatment for common ailments.



### **Free Medical Camp:**

We organized a Free Medical Camp in collaboration with Basaveshwara Medical College & Hospital, Chitradurga, at Muttugaduru Village, Holalkere Taluk, Chitradurga District, on January 11, 2024. The camp benefited approximately 220 individuals. The medical team included 15 professionals, comprising General Physicians, Eye Specialists, Psychologists, Orthopaedics, ENT Specialists, and supporting staff.





### **Drinking Water Facility:**

Installed Reverse Osmosis drinking water plants at four villages surrounding the mine, that are D. Medikeripura, Tanigehalli, Kagalagere, and B. Durga Villages. More than 5000 Families are benefited from this project for the last 10 Years.



R.O. Drinking Water Plant at Tanigehalli



R.O. Drinking Water Plant at Kagalagere



R.O. Drinking Water Plant at D. Medikeripura



R.O. Drinking Water Plant at B. Durga

### Celebration of World Earth Day:

We celebrated World Earth Day on April 22, 2023, with the theme "Invest in Our Planet," aimed at educating companies on sustainable practices. On this occasion, we have donated stainless steel dust bins—10 pairs of 70 liters each—to the Municipality Park at Dhavalagiri layout, Chitradurga. Additionally, a mass plantation program was organized at the lake bed in D. Medikeripura village.





Dust Bins donated to Municipality Park, Dhavalgiri layout, Chitradurga.



Mass Plantation programme at village tank bed, D. Medikeripura village.

### **Desilting of Megalahalli Lake:**

In Megalahalli village, we undertook the desilting of the village lake to increase its water storage capacity, thereby aiding in the recharge of the groundwater table.



## Construction of Tennis Court at Police Grounds

During FY 2023-24, we constructed a tennis court at the Police Grounds in Chitradurga to support sports activities. Additionally, we built a compound wall with mesh for the tennis court.



### Painting of Govt. Higher Primary School:

During this financial year 2023-24 we taken up the improvement of school buildings the painting work of class rooms at Govt. Higher Primary School located at Kagalagere Village.







School Class Room painting at Govt. Higher Primary School, Kagalagere Village.

### **Construction of Library and Meeting Hall at Taralabalu Circle, Muthugaduru**

To fulfil the village's, need and our vision of providing a library facility, we are constructing a library and meeting hall for the Grama Panchayat at Taralabalu Circle, Muthugaduru village. The construction work is currently in progress.



### **ODF: Open Defecation Free:**

As part of this initiative, we have constructed separate toilet blocks including urinals and toilets for girls and boys, at the Government Higher Primary School in Palakihalli Village.



### **Sanitation: Construction of Drainage:**

We have constructed 350 meters length concrete drainage in Kagalagere Megalahatti Village.





### Construction of 190 meters Concrete Drainage

We have constructed a 190-meter concrete drainage in Hireguntanur Village to channelize domestic wastewater and road surface water, connecting it to the main drain line.



Construction of compound wall to Sree Lakshmi Narasimha Swamy Temple,  
Bommenahalli





Construction of Visitor pathway with Interlocking Pavers and Kerb stones at Adumalleshwara Mini Zoo, Jogimatti, Chitradurga.



Construction of compound wall to Sree Gadri Palanayaka Temple, Ganjeegatte.



Construction of compound wall to Govt. Girls Junior College (PU), B.D. Road Chitradurga.



<b>JOHN MINE OF R. PRAVEEN CHANDRA CSR EXPENSES FOR THE YEAR 2023-24</b>			
	<b>Description</b>	<b>Location</b>	<b>Cost in ₹</b>
<b>I</b>	<b>Water storage tanks, drinking water supply facility &amp; irrigation support to agriculture</b>		
1	Maintenance of RO water plant unit	D. Medikeripura, Kagalagere, Tanigehalli and B. Durga village	797900.00
2	Provided RO Plant (Water Purifier) for use to Railway Staff installed an RO plant (water purifier) for the use of railway staff	Sasalu	64900.00
3	Provide Motor Pump Set with all accessories to GHPS	Sirigere	57503.00
			<b>920303.00</b>
<b>II</b>	<b>Preventive measures for mitigation of mine related health</b>		
1	Mobile Health Clinic Staff & Maintenance Exp.	Mine Surrounding Villages	2322352.00
2	Purchase of Medicines for Mobile health Clinic	Mine Surrounding Villages	126609.00
3	Free Medical Camp at Muthugaduru Village	Mine Surrounding Villages	45197.00
			<b>2494158.00</b>
<b>III</b>	<b>Promotion of Hygiene and Sanitation, public health initiatives</b>		
1	Vice of Visually Challenged Support for DRDO	Bengaluru	140000.00
2	Global Health Care Mr. Sudhakar Reddy	Bengaluru	56502.00
3	Thyagaraj G Manipal health Enterprises	Bangaluru	1248561.00
4	Mahesh Sherigar (Vijaya Medicals) Shivamurthy	Bengaluru	320000.00
5	Netra D	D. Medikeripura	5000.00
6	Ranjitha N	D. Medikeripura	25000.00
7	Gangappa HR	D. Medikeripura	30691.00
8	Supritha R	D. Medikeripura	35000.00
9	Asha W/o Ravi	D. Medikeripura	10000.00
10	Saroja bai	D. Medikeripura	10000.00
11	Vishnu ST	D. Medikeripura	130712.00
12	Kumar Naika	D. Medikeripura	100000.00
13	Nageshappa L	Sasalu	25000.00
14	Savitha W/o Ramesh Babu	Chitradurga	50000.00
15	Vaibhava Speech & Hearing Centre Help to Ravikumar	D. Medikeripura	95000.00
16	Nagesh K	D. Medikeripura	39000.00
17	Nagendrappa	D. Medikeripura	25000.00
18	Ashwini	D. Medikeripura	40000.00
19	Gangappa MB	D. Medikeripura	17214.00
20	Anitha P	D. Medikeripura	34100.00

21	Anitha P	D. Medikeripura	9800.00
22	Channaveeraiah	Muthugaduru	1000.00
23	Jashellabai W/o Thippeswamy	D. Medikeripura	15000.00
24	Rukamini Bai	D. Medikeripura	3085.00
25	Kamamma W/O Palakshappa	D. Medikeripura	17000.00
26	Father Mullar Charitable Trust	Bangaluru	184657.00
27	Netravathi	Bangaluru	78426.00
28	Rukamini BS (Deepak MN)	Bangaluru	500000.00
			<b>3245748.00</b>
<b>IV</b>	<b>Skill development &amp; Vocational Training programmes for local communities</b>		
1	Financial help for agricultural development	D. Medikeripura	200000.00
2	Provide 10 No of Stitching Machine & Chair & Stool to Self Help Group	D. Medikeripura	77024.00
			<b>277024.00</b>
<b>V</b>	<b>Promotion of Literacy &amp; Education</b>		
1	Computer Education GHPS D. Medikeripura, Tanigehalli & Kagalagere	Mine Surrounding Villages	139500.00
2	School Bus Staff & Maintenance Exp. DMK to Sirigere	Mine Surrounding Villages	1478207.00
3	School Bus Fees Megalahalli School Students	Mine Surrounding Villages	201500.00
4	Provided 10 No. Smart Class Board to GHPS	Mine Surrounding Village	1427800.00
5	Pratibha Karanje Function	GHPS Kagalagere	10000.00
6	Sponsorship To Daily 300 News Paper for 200 Days Includes Study Material	Mine Surrounding Village	136480.00
7	Donated 500 Sets of Scout & Guid Uniform	Hireguntanur Hobali	474880.00
8	Financial Help for School Annual Day Program	Sirigere	20000.00
9	Donation to CBCI Society of Medical Education	Bangaluru	400000.00
10	Provide Mementoes for Guruvandana Programme	Chitradurga	8036.00
11	Provide Geometry Box & Science Kit to GHPS	Kagalagere	31200.00
12	Donation for school annual day - Arunkumar	D. Medikeripura	10000.00
			<b>4337603.00</b>
<b>a</b>	<b>Education Fees</b>		
1	Financial help for Education Sri Krishna PU Collage School fees	Bangaluru	62000.00
2	Financial help for Education Abhishek MC S/o Channveeraiah Swami	Muthugaduru	43450.00
3	Financial help for Education VCAC PU Collage	Bangaluru	17786.00
4	Financial help for Education Vinay Kumar H	D. Medikeripura	10000.00
5	Financial help for Education Laxmi C	D. Medikeripura	40000.00



6	Financial Help for Education fees (Trisha P) B. SC	D. Medikeripura	2790.00
7	Financial Help for Education fees (Kirthana T) Paramedical	D. Medikeripura	8500.00
8	Financial Help for Education fees (Girish R) Diploma - Electrician	Doddiganhal	10000.00
9	Financial Help for Education fees (Likith M) BCA its Year	D. Medikeripura	10000.00
10	Financial help for Education (Pritham A 5th Class)	D. Medikeripura	10000.00
11	Financial help for Education (Abhishek MC - 1st Year BE)	Muthugaduru	40000.00
12	Financial Help for Education fees (Nirajan) 7th class	Shivamogga (DMK)	10000.00
13	Financial Help for Education fees (Dhanush) 4th class	Shivamogga (DMK)	10000.00
14	Financial Help for Education fees (Dikshith) 1st class	Shivamogga (DMK)	10000.00
15	Financial Help for Daughter (Kruthika) BAMS Education	Chitradurga	40000.00
16	Financial help for Education Kumar Surjyakanta - Diploma	Bangaluru	66550.00
17	Financial help for Education (MR Harshath - 1st PUC)	D. Medikeripura	25000.00
18	Financial help for Education (Rakesh N - Paramedical 2nd Year)	D. Medikeripura	10000.00
19	Financial help for Education (Praneeth Kumar S/O Padma - 2nd PUC)	Muthugaduru	25000.00
20	Financial help for Education (Pretham R S/o Ranganath - 2nd PUC)	D. Medikeripura	40000.00
			<b>491076.00</b>
<b>VI</b>	<b>Support to Social, Cultural, recreational activities</b>		
1	All India Union Congress	Bengaluru	50000.00
2	Donation towards celebration Hindu Mahaganapati	Chitradurga	25000.00
3	Donation Sri Koteda Babuswamy Temple	Kapikad	10000.00
4	Donation To Venugopal Swamy Sangha	Chikkaballapura	100000.00
5	Donation to Kannada Sahithya Parishath State Level Program	Chitradurga	50000.00
6	Donation Towards Chowdeshwari Temple Festival	Chitradurga	7000.00
7	Donation towards Ganapati Festival to mine surrounding village	Mine Surrounding Village	40500.00
8	Mahanadi Gouloka	Bengaluru	590000.00
9	S. Gopal Memorial Foundation	Mysore	500000.00
10	Donation to Shivanchara Kala Sangha Natakavotsva	Muthugaduru	100000.00
11	Prashanthi Balamandira Trust	Bengaluru	1000000.00
12	Provide Ration for Laxmivenkateswara Temple CTA - Pala traders	Chitradurga	94594.00

13	Pooja Expenses D. Medikeripura Temple - Lalitha Bai	D. Medikeripura	48000.00
14	Donation for Shivakumara Mahaswamy Ji (Sirigere) Shradhanjali Program.	Muthugaduru	165478.00
15	Donation towards Karthika Mahotsava Sri Ekanatheshwari Temple	Chitradurga	10000.00
16	Donation Towards Durgambike Jatra Mahotsav	Kagalagere	10000.00
17	Shivasanchara Natakamhotsav	Muthugaduru	25000.00
18	Donation Towards Kariyamma Devi Jatra Mahotsav	Chikkenahalli	10000.00
19	Provide sweet for pooja	Chitradurga	1570.00
20	Donation Towards Marikamba Devi Jatra	Muthugaduru	10000.00
21	Donation for Ayappaswamy Pooja - Basavaraj Naik	D. Medikeripura	70000.00
22	Donation for Bharath Huname - Prasanna SH	Megalahalli	15000.00
23	Ration provided for Gourasamudra Marrama Pooja	Obalapura	9980.00
24	Donation for Mailaralingeshwara Jatra mahostava	Chikkenahalli	10000.00
25	Donation for Eshwara Temple Inauguration	Bommanahalli	50000.00
26	Ration provided for Shri Rama Pooja	D. Medikeripura	15000.00
27	Ration provided for Shri Rama Pooja	Sirigere	24985.00
28	Financial Help for Social Couse to Susheelabao W/O Thipperudreswamy	D. Medikeripura	25000.00
29	Donation to Obaleshwara Temple Mahashivaratri Pooja	Megalahalli	100000.00
			<b>3167107.00</b>
<b>a</b>	<b>Environment Management</b>		
1	Fabrication & Erecting of Chain link Mesh Fencing 600 meters length.	Forest Department Holalkere	3540000.00
2	Provide 20 Nos SS Dust Bins to DB Park CTA	Chitradurga	91450.00
3	Nagappa - Megalahalli Village Lake	Megalahalli	944000.00
4	Jaykar Shetty - Akhil Karnataka Prani Daya Sangha	Bengaluru	125000.00
			<b>4700450.00</b>
<b>b</b>	<b>Support to Marriage</b>		
1	Girijabai W/o Ganga Naik	D. Medikeripura	15000.00
2	Subhadra	D. Medikeripura	15000.00
3	Ganga Bai	D. Medikeripura	25000.00
4	Laitha Bai W/O Kubaya Naik	D. Medikeripura	15000.00
5	Shivakumar N	Chitradurga	15000.00
6	Netravathi	D. Medikeripura	10000.00
7	Neelamma	D. Medikeripura	10000.00
8	Rangamma W/o Praphakar MH	Katehalli	15000.00
9	Mayamma W/o Murgesh	Chitradurga	20000.00
			<b>140000.00</b>



<b>c</b>	<b>House Construction</b>		
1	Anusuya W/o Gangadhara	D. Medikeripura	50000.00
2	Shruthi W/o Pradeep R	D. Medikeripura	50000.00
3	Gauramma W/o Shekhrappa	D. Medikeripura	50000.00
4	Devamma	Kagalagere	20000.00
5	Gauramma W/o Hanumanthappa	Megalahalli	25000.00
6	Neelambika K	Sirigere	25000.00
7	Kariyamma W/O Oballappa	Palikehalli	25000.00
			<b>245000.00</b>
<b>VII</b>	<b>Improvement of Road connectivity, public transport &amp; other infrastructure facilities</b>		
1	Donation for Construction of AITUC office	Chitradurga	500000.00
2	Road Construction & Development from Adanur to Ganjeegatte	Holalkere	24144322.00
3	Road Asphalting Work from Mine to Muthugaduru village Via D. Medikeripura - Kagalagere Villages	D. Medikeripura to Sasalu	1141042.00
4	Provide Stationery to of Police Department	Chikajajur	22150.00
5	Construction Concrete Drain	Hireguntanur	423000.00
6	Provide Computer System to Dy. SP Office Chitradurga	Chitradurga	37500.00
7	Provide Computer System to Forest Department	Holalkere	69000.00
8	Printing CSR Banner Awareness Bord etc	Chitradurga	20544.00
9	Construction of Concrete Drainage 350 Metres length	Megalahatti	600250.00
10	Stone Boards for CSR Actives	Mine Surrounding Villages	30000.00
11	Stone Boards for CSR Actives	Mine Surrounding Villages	8000.00
12	Construction Shade for Banni kalamma Temple	Sasalu	125000.00
13	Painting work of Govt Higher Primary School	GHPS Kagalagere	119516.00
14	Construction of Library	Muttugaduru	477000.00
16	Construction of Sidewall for steps to Shri Ekanatheshwari Temple at Hill top	B Durga	444600.00
17	Construction of Compound wall for Sri Lakshmi Narasimha Swamy Temple	Bommenahalli	445235.00
18	Construction of Drainage Slab work	Kagalagere (Megalahatti)	37550.00
19	Construction of CC Road (800 Metres)	Tanigehalli	515250.00
20	Construction of Concrete Drain	Tanigehalli	193125.00
21	Gravel soling for service Road at Sasalu Railway Bridge	Sasalu	47000.00
22	Construction of Gadaripala Naiyka temple Compound	Ganjigatte	544560.00
23	Construction of Collage compound wall to Govt. Girls Jr. Collage	Chitradurga	1180059.00

24	Construction of Visitors' pathway with interlocking pavers & Kerb Stone	Mini Zoo Chitradurga	769360.00
25	Provided Two Desktop Computer DFO/DCF Office	Chitradurga	42999.98
26	Provide Maths Kit to 76 Nos Students GHPS	Kagalagere	31200.00
27	Chandramma W/o Parmeshwarappa Provision of Current Supply at Ashramma	Kagalagere	5000.00
28	Provided Chair to Govt. Higher Primary School	Malappanahatty	15964.00
29	Provided Computer, Printer & UPS to Gramapanchayti Office	Alagawadi	123950.00
30	Donation for Construction Veterinary Training Centre	Chitradurga	600000.00
			<b>32713176.98</b>
<b>a</b>	<b>ODF</b>		
1	Construction of Scholl Toilet Blocks	GHPS, Palakihalli	366479.00
			<b>366479.00</b>
<b>b</b>	<b>Sports</b>		
1	Financial Support for state level sport - Swaroopa TR	D. Medikeripura	15000.00
2	Financial Support for Hobali level sport - Kirankumar LD	B. Durga	15000.00
3	Provided accessories for State level & Bangalore Division Yoga Competition. Taralabalu Jagadguru Vidya Samsthe	Sirigere	176740.00
4	Chain-link mesh fencing with Green Net for Tennis court Police station	Chitradurga	221089.00
5	Construction of Compound wall 190 x 8 Police station	Chitradurga	412655.00
			<b>840484.00</b>
	<b>Grad Total</b>		<b>53938608.98</b>



## 6. Positive Legacy & Ethical Governance

### RESPECTING HUMAN RIGHTS

We take our human rights obligations seriously. This is demonstrated by our commitment to adopt the Voluntary Principles on Security and Human Rights. We have continued to support families seeking to continue the education of their children by providing tuition fees and by sponsoring to higher education.

We have continued to support providing opportunities for all members of the community to access housing, education, clean water, and food, and improved medical services.

No incidents for human rights violations were recorded in 2023-24.

No Public Grievances registered during the year 2023-24.

### GOOD GOVERNANCE AND ETHICAL PRACTICES

The organisation advocates good governance by upholding the rule of law, which ensures transparency, accountability, fairness, and integrity in all its business transactions.

We have complied with all Statutes, rules, and regulations.

We also adhere to the highest standards in governance to demonstrate to all its stakeholders and the public that, despite criticisms on the mining industry, it remains committed to sound governance practices and compliant with all applicable laws, rules, and regulations.

## DELIVERING A POSITIVE SOCIAL LEGACY

We are focused on leaving a positive socio-economic legacy by building capacity, not dependency. Our support programs contribute to six social investment pillars:

- Improving local education and employment opportunities
- Improving community health
- Support cultural preservation, development, leadership, and empowerment
- Encouraging business development opportunities
- Support conservation of the environment and biodiversity
- Improve community infrastructure to build local and regional capacity.

We are also contributing under DMF (District Monetary Fund) and SPV (Special Purpose Vehicle) of KEMRC for Socio economic upliftment of Mining Impacted areas.

## CODE OF CONDUCT

Our Code of Conduct sets the standard for our commitment to working with respect and integrity and clearly establishes corporate and individual accountability. Our ability to work transparently must never be compromised by our commercial or individual interests. Our Code of Conduct, policies, standards, leadership, and induction training, clearly set out our obligations and the required actions for dealing with any conflicts or breaches. The Code of Conduct sets out the process for reporting any possible conflicts or breaches.

Every employee is provided with access all policies, and governance frameworks through. It is a condition of employment that employees behave in accordance with the Code of Conduct and embrace our values at all times.



## 7. Value Addition



With a vision to add value to iron ore, Shri R. Praveen Chandra has ventured into Steel manufacturing through group company M/s. Prakash Sponge Iron and Power Pvt. Ltd., located at about 75kms away from the mine in Chitradurga District, Karnataka, manufacturing high grade mild steel. As forward integration, we have Induction Furnace, superior equipment such as MSS Converter and LRF (Ladle Refining Furnace) to produce high quality liquid steel.

The liquid steel is then cast in the Continuous Casting Machine to produce Low Phosphorous Low Sulphur (LPS) Mild Steel Billets and MS Re-bars. “TURBOSTEEL” is the brand name of the steel produced at Prakash Sponge Iron and Power Private Limited (PSIP). PSIP is located at Heggere & Kaparahalli villages in Challakere taluk of Chitradurga district, Karnataka.

We have also Setup an Integrated Steel called E. Ramamurthy Minerals and Metals Pvt. Ltd., at Navile Basapura Village, Bhadravati Taluk, Shivamogga Dist. The TMT Re-bars produced here are marked in the brand name of “SHREERAMA”.

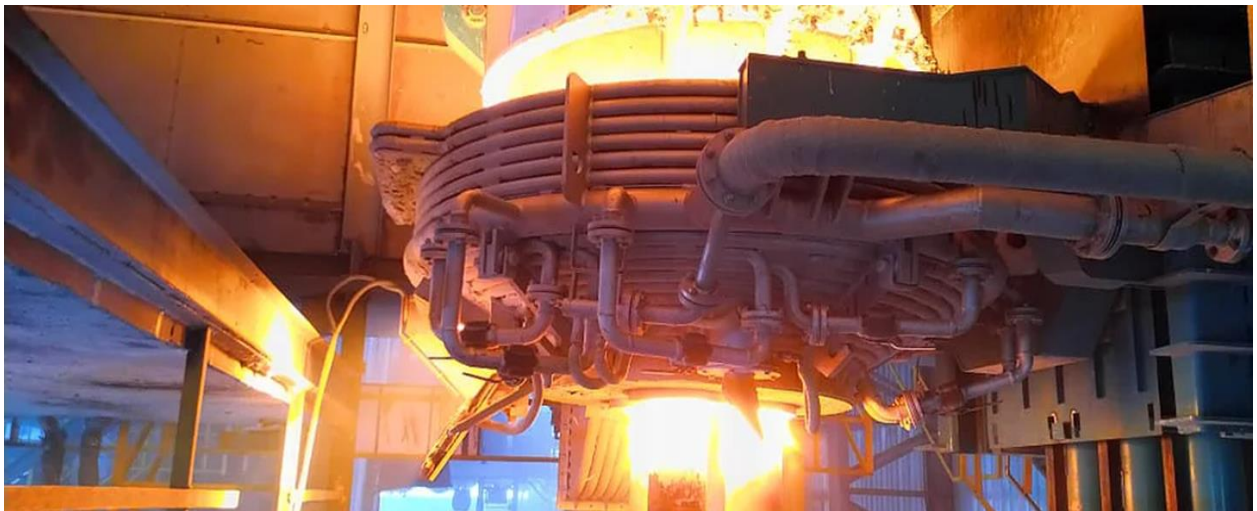
## Iron Ore to Steel under One Roof



# TURBOSTEEL

LPS TMT Bars

Higher Strength | Corrosion Resistant | Cost Effective







*As an organisation, we are committed and stand by the Principles of Sustainability and contribute significantly in achieving the objectives and targets under Sustainable Development Framework.*

*Thank you*